

**2024 CORA COURSE GUIDE**

**HARBOR COURSES**

Start and Finish Line at Carolina YC dock unless otherwise published in race documents.

Check-in is Ch 74 - RC is Ch 73

**COURSE ALPHA "A" – length varies**

The START, MARKS, and FINISH will be designated by Race Committee and communicated on VHF Ch 73.

**COURSE 1 - 5.05 NM**

START  
RG "BP" - PORT  
R "2" - PORT  
R "4" - STARBOARD  
FINISH

**COURSE 2 - 3.40 NM**

START  
RG "BP" - PORT  
"J" - PORT  
R "4" - STARBOARD  
FINISH

**COURSE 3 – 1.35 NM**

START  
R "4" - STARBOARD  
FINISH

**COURSE 7 – 8.67 NM**

START  
RG "BP" - PORT  
R "2" - PORT  
RG "BP" - PORT  
R "2" - PORT  
R "4" - STARBOARD  
FINISH

**COURSE 8 – 12.29 NM**

START  
RG "BP" - PORT  
R "2" - PORT  
RG "BP" - PORT  
R "2" - PORT  
R "2" - PORT  
R "4" - STARBOARD  
FINISH

**COURSE 9 – 5.50 NM**

START  
RG "BP" - PORT  
"J" - PORT  
RG "BP" - PORT  
"J" - PORT  
R "4" - STARBOARD  
FINISH

**COURSE 10 - 7.60 NM**

START  
RG "BP" - PORT  
"J" - PORT  
RG "BP" - PORT  
"J" - PORT  
R "4" - STARBOARD  
FINISH

**COURSE 11 – 5.44 NM**

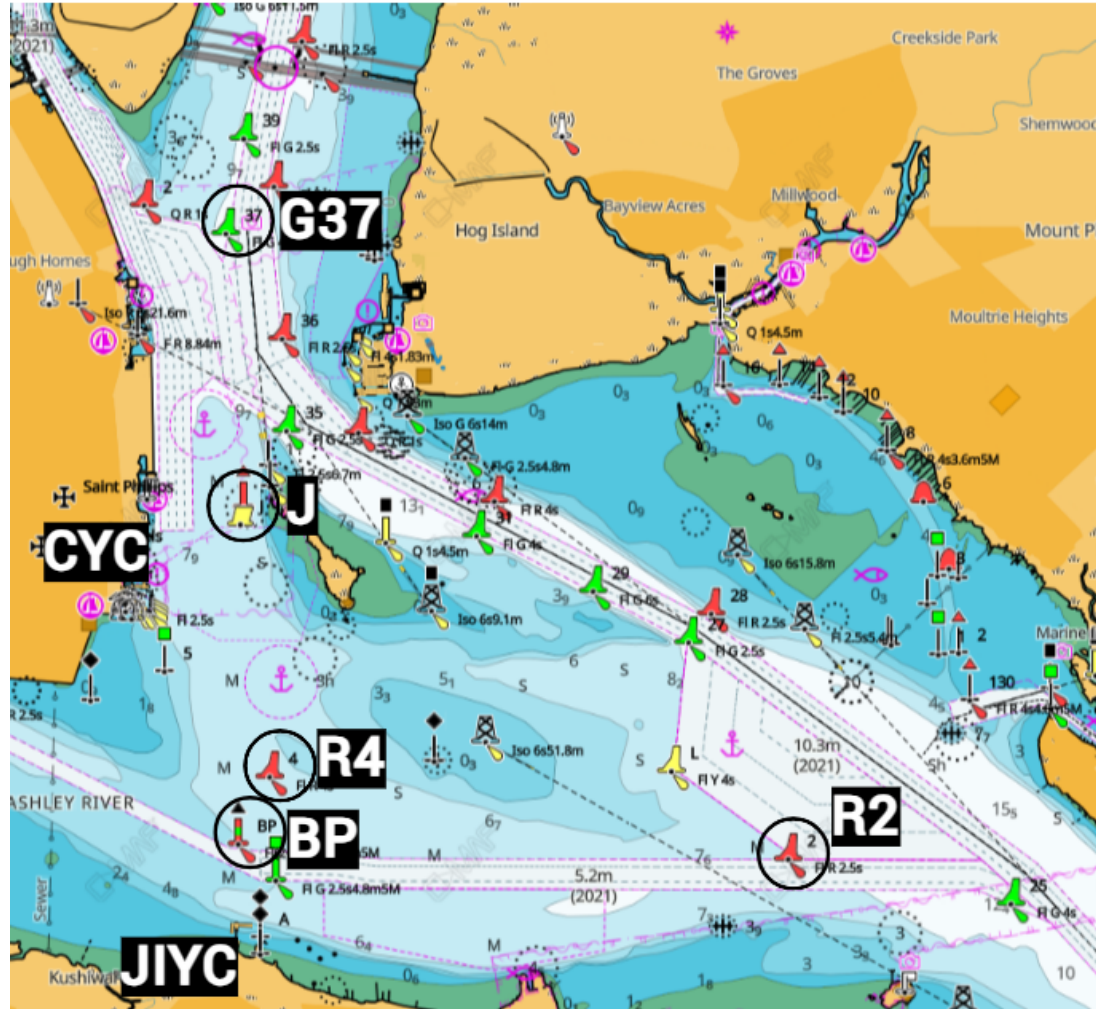
START  
RG "BP" - PORT  
G "37" - PORT  
R "4" - STARBOARD  
FINISH

**COURSE 12 – 5.68 NM**

START  
RG "BP" - PORT  
G "37" - PORT  
RG "BP" - PORT  
FINISH

**COURSE 13 – 9.31 NM**

START  
RG "BP" - PORT  
G "37" - PORT  
RG "BP" - PORT  
G "37" - PORT  
R "4" - STARBOARD  
FINISH



**COURSE 14 – 9.69 NM**

START  
RG "BP" - PORT  
G "37" - PORT  
RG "BP" - PORT  
G "37" - PORT  
RG "BP" - PORT  
FINISH

**COURSE 15 – 7.41 NM**

START  
RG "BP" - PORT  
G "37" - PORT  
RG "BP" - PORT  
"J" - PORT  
R "4" - STARBOARD  
FINISH

**COURSE 17 - 4.81 NM**

START  
R "4" - PORT  
R "2" - PORT  
R "4" - STARBOARD  
FINISH

**COURSE 20 – 4.07 NM**

START  
G "37" - PORT  
RG "BP" - PORT  
FINISH

**COURSE 21 – 8.09 NM**

START  
G "37" - PORT  
RG "BP" - PORT  
G "37" - PORT  
RG "BP" - PORT  
FINISH

**COURSE 22 – 7.71 NM**

START  
G "37" - PORT  
RG "BP" - PORT  
G "37" - PORT  
R "4" - STARBOARD  
FINISH

**COURSE 23 – 7.28 NM**

START  
G "37" - PORT  
R "4" - PORT  
G "37" - PORT  
R "4" - STARBOARD  
FINISH

**COURSE 24 – 2.26 NM**

START  
"J" - PORT  
RG "BP" - PORT  
FINISH

**COURSE 25 – 2.86 NM**

START  
"J" - PORT  
RG "BP" - PORT  
"J" - PORT  
FINISH

**COURSE 26 – 5.66 NM**

START  
"J" - PORT  
RG "BP" - PORT  
R "2" - PORT  
R "4" - STARBOARD  
FINISH

**COURSE 27 - 4.42 NM**

START  
G "37" - PORT  
"J" - PORT  
G "37" - PORT  
FINISH

**COURSE 28 - 6.34 NM**

START  
G "37" - PORT  
"J" - PORT  
G "37" - PORT  
"J" - PORT  
G "37" - PORT  
FINISH



James Island Yacht Club



CORA SAILING POLICY - Check In

- 1. A boat intending to race shall check in with the Race Committee using the boat name, sail number and Class participation via VHF channel 74.
2. In the instance that VHF check in is impossible, a boat may check in verbally with RC. However, verbal check-ins are NOT ALLOWED for all Offshore races.
3. A boat shall continue to hail the Race Committee on VHF channel 74 until the competitor has been acknowledged by the Race Committee via VHF radio or verbally.
4. Boats failing to check in will not be scored.
5. Competitors should monitor VHF channel 73 for course announcements, starting order, and other race information.
6. If there is a conflict between this Sailing Policy and individual CORA race Sailing Instructions (SI's) that may be posted for CORA events, the SI's for that event will take precedence.

CORA SAILING POLICY - Finish Line - Harbor Races

- 1. For Harbor races started from a dock, Boats shall not sail back through the finish line after finishing.
1.1. Boats doing so shall be given a scoring penalty equal to 20% of the number of boats entered in that class for that race without a hearing.
1.2. This rule does not apply when the start line is between a flag or starting mark by the Carolina YC dock and the Castle Pinckney flagpole.
2. All boats finishing after dark are required to identify themselves via hail to the Race Committee after crossing the finish line.
3. In the event the Race Committee is not on station at the finish, each boat shall record its own finishing time and report to the Rear Commodore at its first opportunity.
4. If there is a conflict between this Sailing Policy and individual CORA race Sailing Instructions (SI's) that may be posted for CORA events, the SI's for that event will take precedence.

2024 CORA Board of Directors and Contacts

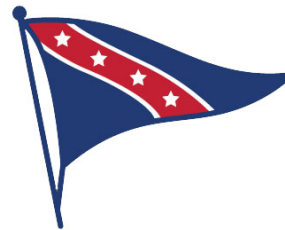
Commodore: James O'Connor - commodore@charlestonoceanracing.com
Past Commodore: Christopher Stinson - pastcommodore@charlestonoceanracing.com
Vice Commodore: Scott Strother - vicecommodore@charlestonoceanracing.com
Rear Commodore: Tim Viennau - rearcommodore@charlestonoceanracing.com
Race Management Sub-committee: RC@charlestonoceanracing.com
Offshore Sub-committee: offshore@charlestonoceanracing.com
Treasurer: Kristen Buckley - treasurer@charlestonoceanracing.com
Sponsorships: sponsors@charlestonoceanracing.com
Measurer: John Lucas - measurer@charlestonoceanracing.com
Solicitor: Patrick Chisum, ESQ - solicitor@charlestonoceanracing.com
Secretary: Allison Hansen - secretary@charlestonoceanracing.com
Social Media Contacts: socialmedia@charlestonoceanracing.com
Historian: Dan Machowski - historian@charlestonoceanracing.com
Military Salute Regatta: msr@charlestonoceanracing.com

Charleston Ocean Racing Association

164 Market Street, Suite 282
Charleston, SC 29401

Contact: secretary@charlestonoceanracing.com

Website: https://charlestonoceanracing.com/



MILITARY SALUTE REGATTA

2024

PRESENTED BY BLACKBAUD

Race Signals

Postponement Signals: AP Races not started are postponed. AP over H Races not started are postponed. AP over A Races not started are postponed.
AP over a numeral pennant 1-9 Postponement of 1-9 hours from the scheduled starting time.
Abandonment Signals: N All races that have started are abandoned. N over H All races are abandoned. N over A All races are abandoned. Safety V Monitor communication channel for safety instructions.
Preparatory Signals: P Preparatory signal. Rule 30.1 is in effect. Z Rule 30.2 is in effect. U Rule 30.3 is in effect. Black flag. Rule 30.4 is in effect.
Recall Signals: X Individual recall. First Substitute General recall. Shortened Course S The course has been shortened.
Course Change Signals: C The position of the next mark has been changed. to starboard; to port; to decrease the length of the leg; to increase the length of the leg.
Other Signals: L Ashore: A notice to competitors has been posted. M The object displaying this signal replaces a missing mark. Y Wear a personal flotation device. Orange flag. The staff displaying this flag is one end of the starting line. Blue flag. The staff displaying this flag is one end of the finishing line.

The meanings of visual and sound signals for 2021-2024 are stated above. An arrow pointing up or down (↑ ↓) means that a visual signal is displayed or removed. A dot (•) means a sound; five short dashes (- - - -) mean repetitive sounds; a long dash (—) means a long sound. When a visual signal is displayed over a class flag, fleet flag, event flag or race area flag, the signal applies only to that class, fleet, event or race area. © 2021 US Sailing